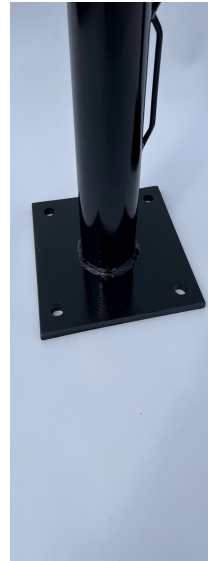


Surface Mount Pickleball Posts

PROPBSM-B8I
PROPBSM-G8I

post size	2-7/8" round; 36" high
construction	12-gauge powder-coated galvanized steel upright with 8" x 8" x 3/8" welded metal base. Base includes four 5/8" mounting holes.
post caps	powder-coated aluminum caps with wheels
winder	Internal Brass winder
hooks	4.5" cable hooks
lacing roads	integrated welded steel
warranty	3-year limited warranty



Green



black

specifications and colors subject to variation.
Please consult a local structural engineer to specify the type and size of anchor needed.